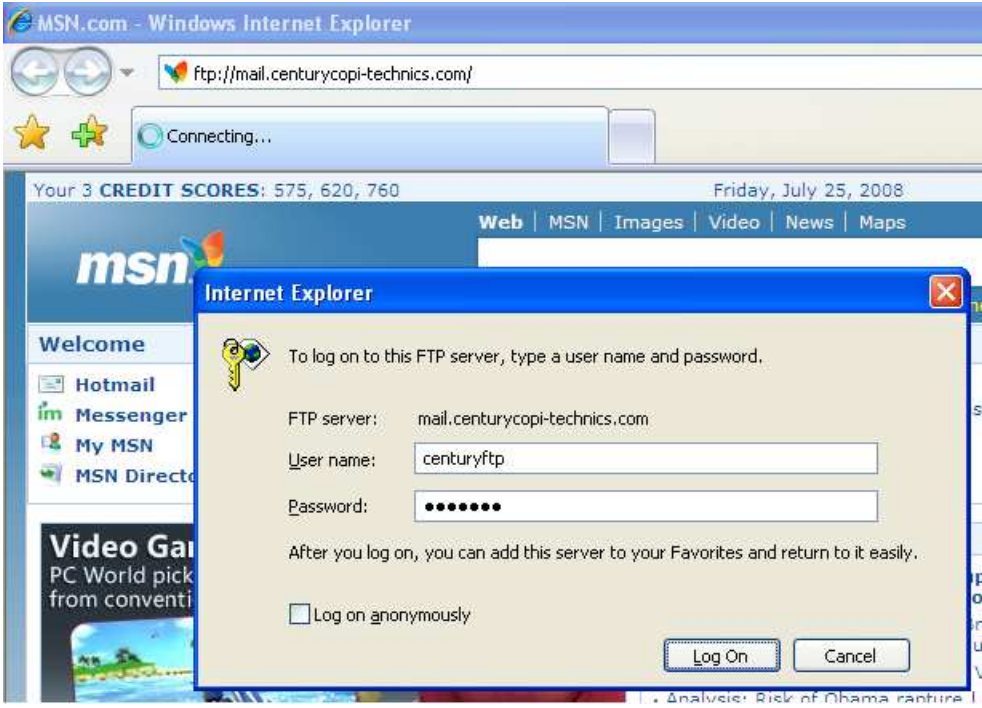
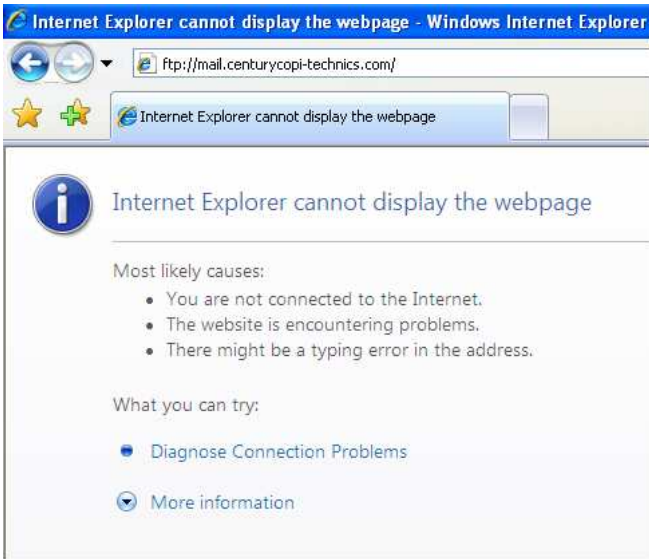


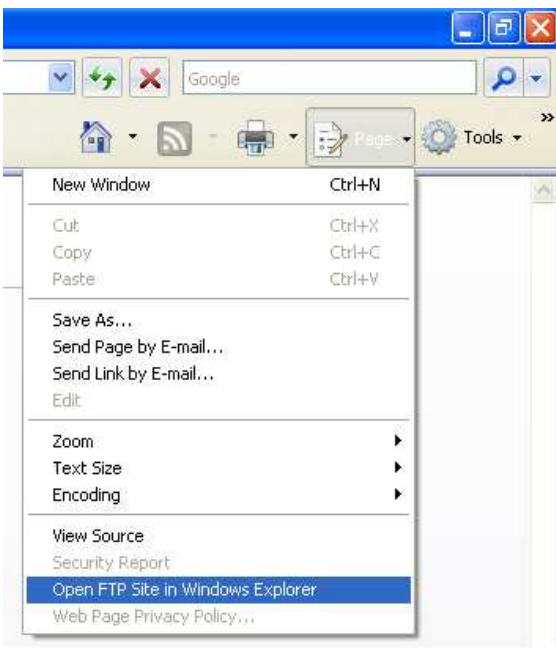
First Login Attempt: Type in the ftp address in the search bar, <ftp://mail.centurycopi-technics.com>. Then input the username and password when prompted, username is [centuryftp](#) and password is [century](#).



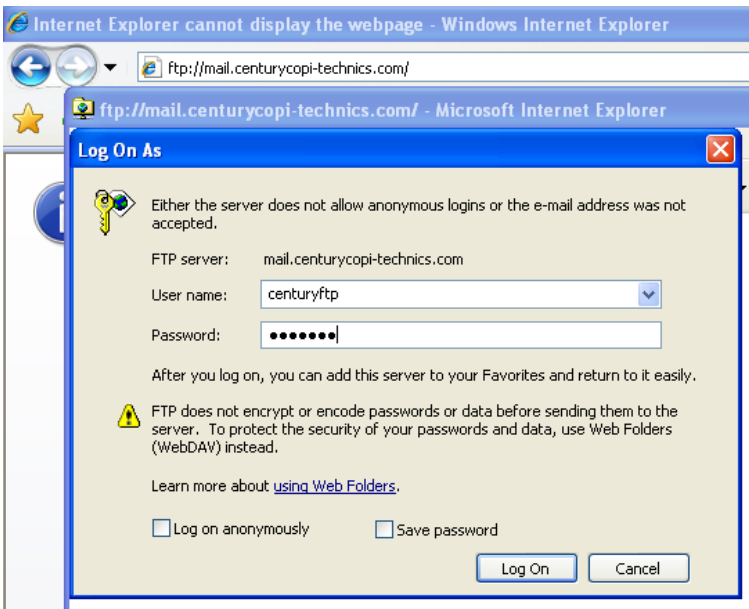
You will then see the below message:



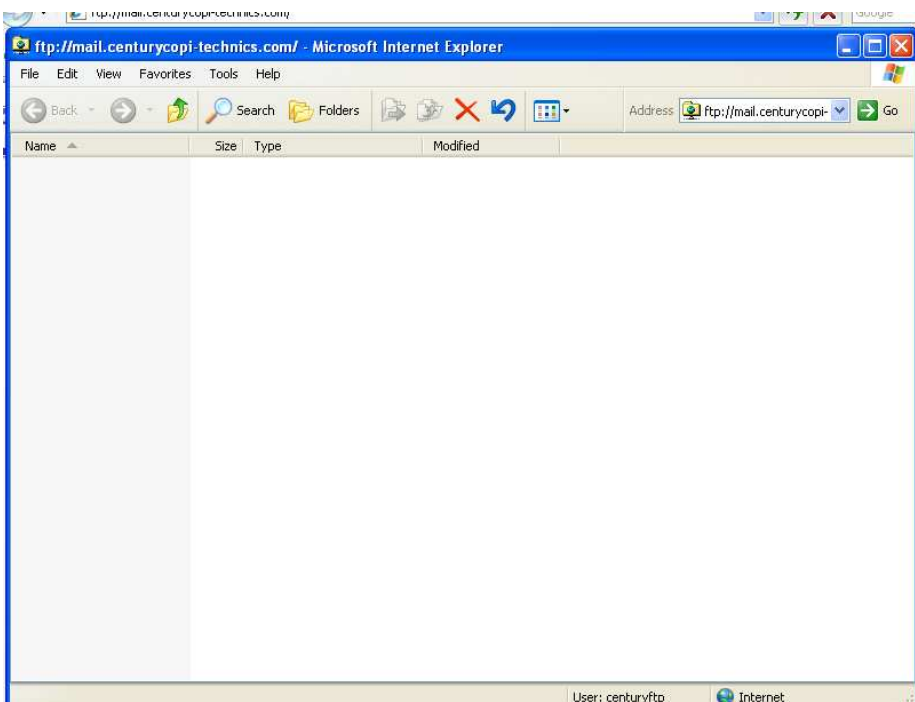
Go to Page then select Open Ftp site in windows explorer.



You will be prompted to entered the username and password again, user: [centuryftp](#) and password: [century](#).



After this second login you are successful and you may start uploading your files. You may see the below screen when successful.



Now you may create your own folder and begin uploading your files. After you have finished uploading your files send us an email with the specifics on your print order or use our websites online request form located under the contact info page.

214-521-1991
plotting@centurycopi-technics.com